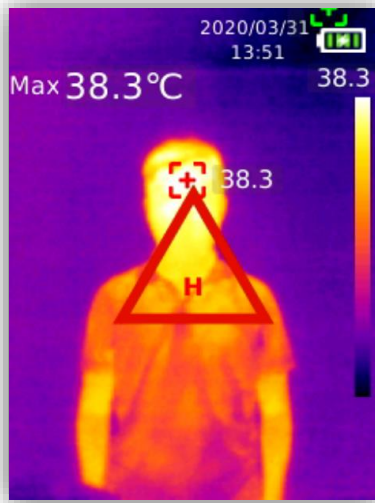


# BE-5302 Thermal Imager



## Feature

- Non-contact real-time temperature measurement, quick safety alerts
- 2.8" TFT LCD monitor with real-time temperature display
- High-end dual lens design for greater accuracy
- Thermal imaging resolution 160 x 120 pixels
- Visible optical resolution 640 x 480 pixels
- Temperature measurement accuracy of  $\pm 0.5^{\circ}\text{C}$  (within 1 meter)
- Temperature range from  $30^{\circ}\text{C}$  to  $45^{\circ}\text{C}$
- White LED light warning or illumination
- Take pictures manually or automatically, save to SD card or hard drive
- Real-time video transfer to computer display via USB cable
- 1/4" standard hole position to attach to camera tripod
- Windows PC software for analysis and voice alerts
- Built-in high capacity 5000mAh lithium battery
- Type-C USB interface charging



www.BlueEyes.com.tw

# BE-5302 Thermal Imager

## Specification

Sensor	Uncooled focal plane
Temperature range	30°C~45°C
Resolution	0.1°C
Accuracy	±0.5°C @1m
Minimum measuring distance	15cm
Temperature measurement response time	≤500ms (95% of reading)
Pixel of thermal imagery	19200 (160×120)
Pixel dimensions	12μm
Palettes	Iron red, rainbow, white, black, red, lava, high-contrast rainbow
Bandwidth of infrared spectroscopy	8~14μm
Field of view (FOV)	56°(H) × 42°(V)
Instantaneous field of view (IFOV)	6mrad
Thermal imaging sensitivity	< 50mk
Frame rate	< 9Hz
Temperature display	Center temperature measurement and high temperature tracking (default)
Image format	BMP
Image modes	Thermal imagery, digital camera (visible light), fusion
Temperature measuring point	Besides central point, 3 temperature measuring points can be added
Visible light	√
Resolution of visible light	640×480
Display resolution	320×240
Mixed setting	0% (total visible light), 25%, 50%, 75%, 100% (total thermal imagery)
PC analysis software (PC)	√
Real-time image transmission	√ (PC software image projection)
Data communication	Type-C USB
Auto power off	Selectable (5min, 10min, 30min), 30min auto power off (default)
Service time	≥6 hours
Charging time	≤5 hours
Charging voltage/current	5V/2A
Image storage	Micro SD card
Power	A single Li-ion 3.7V/5000mAh 26650 battery
Display	2.8" TFT LCD
Product size	236mm x 75.5mm x 86mm
Standard accessories	Manual, Type-C USB cable, 16GB TF card
Product weight	500g

© BlueEyes Technology Corporation. BlueEyes Technology and BlueEyes are registered trademarks or trademark applications of BlueEyes Technology in various jurisdictions. All other company names and products are trademarks or registered trademarks of their respective companies. We reserve the right to introduce modifications without notice.